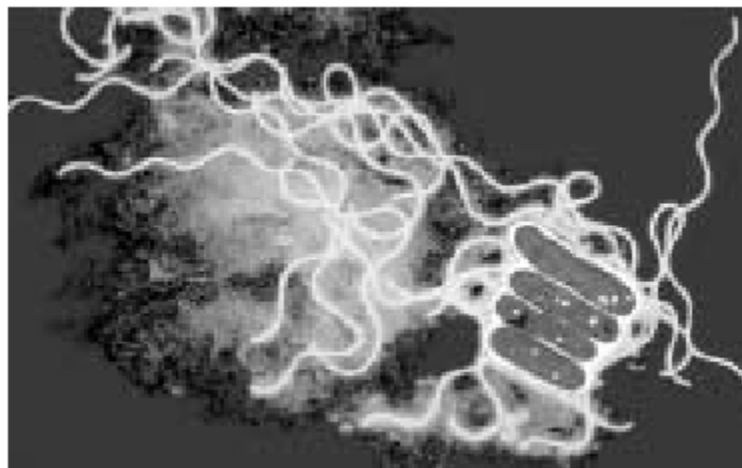


Cooling Towers & Chlorine Dioxide

The use of chlorine dioxide in cooling towers, loops and cooling systems greatly assists in the control of Legionella bacteria, algae, planktonic bacteria, biofilm and scale, helping to control the presence of dangerous bacteria and maintain the efficiency of heat exchanger surfaces, reservoir intakes, and ancillary equipment.



Cooling Towers and Chlorine Dioxide

The use of chlorine dioxide in cooling towers, loops and cooling systems greatly assists in the control of Legionella bacteria, algae, planktonic bacteria, biofilm and scale, helping to control the presence of dangerous bacteria and maintain the efficiency of heat exchanger surfaces, reservoir intakes, and ancillary equipment.

Traditional oxidising agents such as chlorine and bromine suffer from pH constraints and corrosion problems. Chlorine dioxide is significantly more stable than other oxidising biocides and is also compatible with most water treatment chemistry.

Why is it important to control biofilm in such systems?

Biofilm protects colonies of unwanted bacteria and also acts as an insulator causing deterioration in general heat transfer properties. It creates fouling and corrosion problems by accumulating scale in pipe work and equipment. Biofilm also creates an environment that promotes the growth of anaerobic microorganisms, including Legionella bacteria, which in turn increases microbiologically induced corrosion (MIC) problems.

Additional Information & Expert Assistance

For further information and expert assistance please contact:

Legionella Control International
Quay West
Trafford Wharf Road
Manchester M17 1HH
United Kingdom

Telephone: +44 (0) 161 240 2245

E-mail: info@legionellacontrol.com.