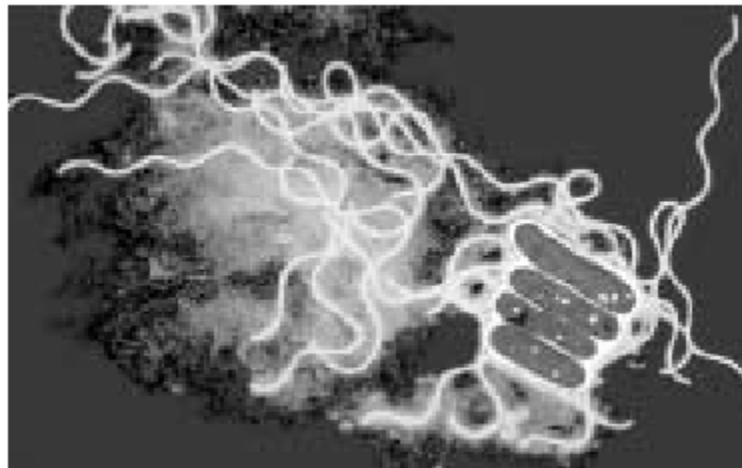


# Legionnaires' Disease Symptoms?

*The germ which causes Legionnaires' disease is a bacterium called Legionella pneumophila.*



## Legionnaires' Disease Symptoms

The symptoms of Legionnaires' disease are similar to the symptoms of the flu: high temperature, feverishness and chills;

- *cough;*
- *muscle pains;*
- *headache; and leading on to*
- *pneumonia, very occasionally*
- *diarrhoea and signs of mental confusion.*

If you develop the above symptoms and you are worried that it might be Legionnaires' disease, see your general practitioner.

Because it is similar to the flu, it is not always easy to diagnose. A blood or urine test will be helpful in deciding whether an illness is or is not Legionnaires' disease. When doctors are aware that the illness is present in the local community, they have a much better chance of diagnosing it earlier.

If you suspect that you may have got the illness as a consequence of your work then you are advised to report this to your manager, as well as your health and safety representative and occupational health department, if you have one. In the UK there is a legal requirement for employers to report cases of Legionnaires' disease that may be acquired at their premises to the Health and Safety Executive.

Updated 13.1.04 - Parts of this document © Crown Copyright 2004 - originally produced and published by the UK's Health & Safety Executive.

## Additional Information & Expert Assistance

For further information and expert assistance please contact:

Legionella Control International  
Quay West  
Trafford Wharf Road  
Manchester M17 1HH  
United Kingdom

Telephone: +44 (0) 161 240 2245

E-mail: [info@legionellacontrol.com](mailto:info@legionellacontrol.com).